



JAMES ROBERTSHAW

est.1860

BESPOKE AWNINGS & BLINDS

COUNTER-TENSIONING AWNING SYSTEMS



JAMES ROBERTSHAW

est.1860

BESPOKE AWNINGS & BLINDS

Family owned James Robertshaw has over 160 years experience of designing, manufacturing and installing bespoke awnings, coverings and blinds for the specific needs of operators in the leisure & hospitality, blind & curtain trade and residential sectors.

About Us.

Our story began back in 1860, when Mr James Robertshaw of Collyhurst, Manchester set up shop manufacturing traditional box shop awnings, complete with hand-carved woodwork. Added to this were metal roller blinds and other companion components, all fabricated on-site, beginning an unbroken trading history spanning an incredible seventeen decades, three centuries and two millennia.

During those first one hundred years, JR cemented its company status with a number of patents, including its famous 'Spring Roller' design in 1908. That commitment to innovation and technical advancement remained at the heart of the organisation ever since.

From the Victorian age of the Industrial Revolution, through two World Wars and more than a few depressions, the company survived and thrived. It re-located from its original factory in Collyhurst and settled in a historical spinning mill in Farnworth.

The business stayed within the Robertshaw family until the death of James' grandson, William Lancelot Robertshaw in 1960 and was purchased by then Production Manager Arthur Harrison. It is then that the modern story of JR really begins. In 1978, the company was taken over by 25 year old Nigel Sharrock, who would carry the JR brand from out of its Victorian history and into the modern world. For nearly forty years, Nigel continually strove to improve products, processes and service that JR is renowned for.

After Nigel's retirement in 2016, JR is still a family owned and managed business with Nigel's wife, Lesley and son Matthew, joining him sitting on the board of directors. In 2010 after 50 years at its Farnworth home, JR re-located again to its current, modern facilities and headquarters at Horwich, Bolton.

All products are designed, manufactured and showcased within our current home and Customer Centre. With a wide reaching client base ranging from trade sub-dealers; independent, national and hospitality brands; architects, contractors, residential, education and health-care; James Robertshaw has the creativity, expertise and knowledge to make a visible difference to any business or home.

James Robertshaw. We don't just find the solution, we create it.





A103: Pergo-Line



A102: X-Line



A103: Pergo-Line

Experience Outdoor Living.

As our summers get hotter, we need solutions that cover all requirements. Whether for a patio, veranda or freestanding space, James Robertshaw design and manufacture systems to shade and protect large areas - all with the quality and choice that you would expect!

On warmer days awnings provide an airy alfresco ambiance. On colder and inclement days, heating and outdoor blinds or retractable glass balustrades provide protection, giving that unique garden party feeling and resulting in your business becoming even more attractive to diners. Awnings expand your commercial or residential hospitality space by substantial square metre coverage, enabling maximum profit.

Counter-Tensioning

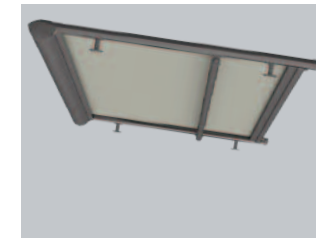
Counter-Tensioning Awning Systems provide shade and shelter for large, flat and square or rectangular areas and are the ideal complement to modern glass architecture. The systems are operated by the built-in counter-tensioning device (a spring mechanism within the fabric roll), which keeps the fabric taut in any position, resulting in the system being more resilient in wind than folding-arm awnings. Systems (even linked together) can be created without direct lateral light ingress.

5-Year Guarantee

As with all our systems, James Robertshaw Counter-Tension Awning Systems are also CE tested. High quality and corrosion resistant materials and coatings guarantee a durable product, which will enable you to enjoy every ray of sunshine.

Operation

Somfy io Home Control® radio-controlled automation, allows seamless integration into any smart system, as an option. Increase your comfort with a wind or sun sensor.



A102: X-Line
The roof awning.
Shades both pergola or conservatory systems creating a pleasant climate.



A103: Pergo-Line
The pergola awning.
Shades large patio areas without additional supporting structure. The sturdy vertical supports protect from sun and rain.



A104: Free-Line
The free-standing awning.
Can be positioned anywhere on any patio or in a garden without an existing construction.

Accessories.

Smart home

Products from James Robertshaw are compatible with a wide range of smart home systems – whether completely automated or operated via smartphone or remote control.

Wind, light and rain sensors

If limits for wind strength and light intensity are exceeded or fallen below, your system will automatically retract or extend. Reaction to rain can also be controlled – make your sun protection smart!

Branding

Do you own a hospitality venue with outside seating? Complete the image with bespoke advertising on your awning. Thanks to the possibility of fabric printing, you can have anything printed on the fabric, from text to logos and photographs!

Roof extension

The shaded area underneath the Counter-Tensioning Awning Systems is dependent on the current orientation of the sun. The vertical leg pillars can be adjusted and positioned before the system meets its maximum projection, creating an overhang of up-to 1,200mm. Refer to image A103 PergoLine for reference.



Lightview LED light strip

Do you require more light on the patio? With our Lightview LED lighting system, it's no problem. A continuous light strip in a naturally anodised aluminium profile, creates up to 720 lumens of dimmable light per metre, to your space, at the touch of a button. In addition, once installed, the lighting strip can be rotated +/- 45°.



A102: X-Line



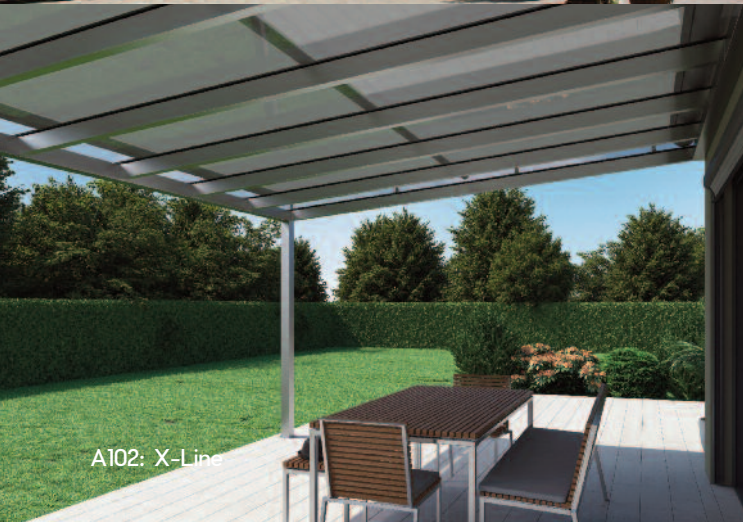
A103: Pergo-Line



A103: Pergo-Line



A102: X-Line



A102: X-Line

Colours, Designs and Fabrics.

More than just a fabric!

The fabric of an awning protects, shades, creates colour atmosphere, designs and decorates. The fabric sets the mood and influences personal wellbeing by filtering and colouring the light, giving the room and the environment a special colour tone. This effect is determined principally by the colour, pattern and translucency of the blind fabric.

Soltis 92

Soltis 92 is a true heat shield. Thanks to its micro-ventilation, it regulates the heating effect of the sun and limits the greenhouse effect. It's unrivalled thermal performance reduces the use of air conditioning in buildings and has a positive effect on the total energy requirement of the building. In addition, Soltis 92 provides unequalled transparency without glare.

Irisun Premium

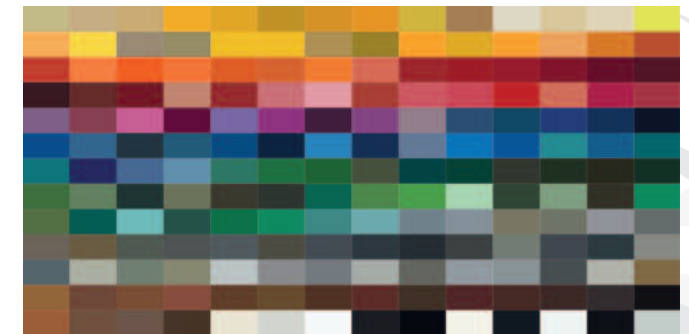
This solution dyed acrylic, coated on one side with anti-mould and waterproof treatment, is characterised by particularly brilliant colours, whose high luminosity lasts an extraordinarily long time. This is due to the very smooth and dense surface of the fabric, which makes it harder for dirt to adhere (effective self-cleaning effect). The fabric is extremely water repellent.

Acrylic Solids

100% solution dyed outdoor acrylic. The solution dye assures a high resistance of the colours to UV. Duraclean treatment for high water repellence and strong anti-dirt. Acrylic fabrics are distinguished in particular by a wide selection of strong colours. In addition to all these positive properties, sun protection is not neglected - the UV protection of these fabrics varies from factor 40 to factor 80.

Frame Colours

With over 200 RAL frame colours and more than 260 fabrics, you can find your favourite awning at James Robertshaw - however unusual the request! There's a perfect awning model for virtually all dimensions and styles.



Smart-Home.

Smart living starts with TaHoma®

Somfy Smart Home puts you in control, making your life easier, more comfortable and gives peace of mind, wherever in the world you are.

Monitor and operate awnings, roller shutters, window decoration, lights, electrical equipment, heating, garage door and gate with your smartphone, tablet or voice.

You can adjust everything about the Somfy Smart Home System to accommodate your personal preferences - it can be monitored and operated from anywhere in the world.

Keep an eye on your home using cameras and movement detectors for home surveillance, for great peace of mind.

Somfy TaHoma is a smart box and the heart of your Smart Home. It links you to your home via the smart TaHoma app.

These solutions are extremely easy to use and can be installed with very little trouble. You can add products whenever it suits your needs or your budget. Get the most from your home with the least possible effort.



“ These solutions are extremely easy to use and can be installed with very little trouble. You can add products whenever it suits your needs or your budget ”





A102: X-Line



A102: X-Line



A102: X-Line

A102: X-Line.

The A102: X-Line roof awning system provides the ideal room temperature within the glazed area (pergola, conservatory, atrium, glass room or skylight), whatever the orientation of the sun. From horizontal to vertical, anything is possible.

Note, if the A102: X-Line is being specified to protect against rainfall, a minimum pitch angle of 15 degrees is required as standard.

Operation:

- > io Somfy 230v motor

Specification:

- > Width: 6,000mm in a single system, 8,000mm in a coupled system
- > Projection: 7,000mm

Application:

- > Residential
- > Commercial

Standard Fabrics:

- > Irisun
- > Soltis 92
- > Precontraint 302

Benefits:

- > 5 year guarantee
- > Spacer, angle, reveal and U-spacer brackets
- > Fabric fully retracts within the cassette profile
- > Smart control optional
- > Zip rail system optional
- > Wind resistance class (according to DIN EN 13561: 2015): 2

Coupled system

The advantage of a coupled system is that you only require one motor for every two systems, thus saving costs. The coupled system require a motor for each A102: X-Line element, but as a result can also be controlled separately.



A103: Pergo-Line.

The A103: Pergo-Line terrace awning system contributes to additional covers, longer dwell time and increased spending, within the leisure and hospitality industry. In addition, these systems are ideal for shading and protection within the residential sectors.

Note, if the A103: Pergo-Line is being specified to protect against rainfall, a minimum pitch angle of 15 degrees is required as standard.

Operation:

- > io Somfy 230v motor

Specification:

- > Width: 6,000mm in a single system
- > Projection: 7,000mm

Application:

- > Residential
- > Commercial

Standard Fabrics:

- > Irisun
- > Soltis 92
- > Precontraint 302

Benefits:

- > 5 year guarantee
- > Uprights up-to 3,000mm
- > Fabric fully retracts within the cassette profile
- > Integrated water channel
- > Smart control optional
- > Zip rail system optional
- > LED light strip optional
- > Coupled system optional
- > Infrared radiant heat optional
- > Wind resistance class (according to DIN EN 13561: 2015): 2

Coupled system

The advantage of a coupled system is that you only require one motor for every two systems, thus saving costs. The coupled system require a motor for each A103: Pergo-Line element, but as a result can also be controlled separately.



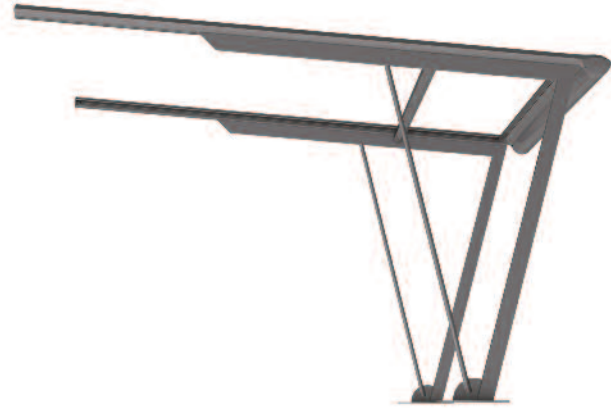
A103: Pergo-Line



A103: Pergo-Line



A103: Pergo-Line



A104: Free-Line.

The A104: Free-Line free standing awning system is suitable for use to provide flexible shading of patios, verandas and eating areas. There is no requirement to install the A104: Free-Line to a building - the system is installed on two steel support leg pillars, which are anchored to a fixed substrate (e.g. concrete foundation).

Note, if the A104: Free-Line is being specified to protect against rainfall, a minimum pitch angle of 15 degrees is required as standard.

Operation:

- > io Somfy 230v motor

Specification:

- > Width: 5,000mm in a single system
- > Projection: 5,000mm

Application:

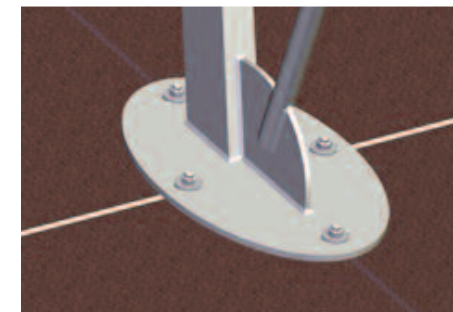
- > Residential
- > Commercial

Standard Fabrics:

- > Irisun
- > Soltis 92
- > Precontraint 302

Benefits:

- > 5 year guarantee
- > Free-standing steel supports
- > Fabric fully retracts within the cassette profile
- > Integrated water channel
- > Smart control optional
- > Zip rail system optional
- > LED light strip optional
- > Infrared radiant heat optional
- > Wind resistance class (according to DIN EN 13561: 2015): 2



Meet the Sales Team.

James Robertshaw has a highly skilled and professional team working together with its clients to provide the right, bespoke solutions.

With the same point of contact throughout the whole process, James Robertshaw will ensure all products are manufactured, delivered and installed on time and to budget.

The team of architects, designers, surveyors and installers are highly skilled and trained, capable of working to the tightest of deadlines and the most demanding of physical environments.

To find out more about James Robertshaw and its products, contact one of the sales team today.

t: 01204 574 764 e: sales@jamesrobertshaw.co.uk



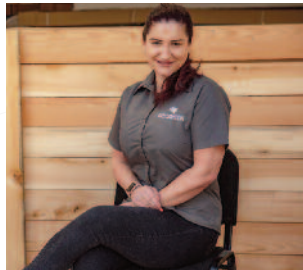
Matthew Garnett
Managing Director



Tony Garbe
Area Sales Manager



Sean Smith
Area Sales Manager



Nikki Burkhill
Sales & Customer Service
Manager



Elaine Partington
Sales & Administration



Janine Wain
Sales & Administration





ROLLER BLINDS



VERTICAL BLINDS



SKYLIGHT BLINDS



BESPOKE BLINDS



AWNINGS



CANOPIES



PARASOLS



GLASS PERGOLAS



RETRACTABLE ROOFS



BARRIERS



PLANTERS



RETRACTABLE
PARAPET GLASS



JAMES ROBERTSHAW
est.1860
BESPOKE AWNINGS & BLINDS