

**JAMES ROBERTSHAW**

est.1860

**BESPOKE AWNINGS & BLINDS**

## A103: PERGO-LINE INSTALLATION GUIDE

A102: X-Line are shared components with the A103: Pergo-Line system

A-SERIES  
A103: TERRACE AWNING COLLECTION

## Contents

1. Safety .....	02
1.1. Explanation of the safety notes.....	02
1.2. General safety information.....	02
2. Installation of the awning.....	03
2.1. Tools, resources and materials.....	03
2.2. Installation preparations.....	03
2.3. Wind classes: definition and classification .....	03
2.4. Installation situations: wall, ceiling and rafter.....	03
2.5. Installation height and position of the brackets .....	04
2.6. Fixing the Installation brackets.....	04
2.7. Installing the cassette .....	04
2.8. Installing rails and posts .....	05
2.9. Installing the distance tube(s).....	05
2.10. Installing rails and supports .....	05
2.11. Alignment of the system.....	06
2.12. Row system.....	06
2.13. Coupled system.....	06
3. Initial operation .....	07
4. Removing the Terrace Awning.....	07
5. Troubleshooting.....	07
5.1. Driving gear does not work .....	07
5.2. System does not extend or retract fully.....	08
5.3. System does not close on one side.....	08
5.4. Awning sags unevenly.....	08
5.5. When operated, system moves by jerks and jolts or generates indefinable noises.....	09

## 1. Safety notes, warnings & installation information

### 1.1. Explanation of the safety notes:

Safety notes and important information are integrated in the text as appropriate. The following symbols are used to alert the reader/user of the instructions.



This symbol means that the relevant note is important for the safety of persons or for the function of the awning.



This symbol highlights important product information for the installation engineer.

### 1.2. General safety information:



The A103: Pergo-Line Terrace Awning has been designed and manufactured in conformity with DIN EN 13561. However, when the awning system is installed or operated, the persons involved in the respective activity maybe at risk if the relevant instructions are not observed. Only qualified companies or trained personnel maybe permitted to install James Robertshaw terrace awning systems. Always observe the information and notes within this Installation Guide. A failure to observe the relevant information and to forward to the end user the supplied User Guide booklet will render the manufacturer's liability null and void.



The safety-at-work and accident prevention regulations specific to each country must be complied with. In particular, a person performing special work at height must be suitably secured. The notes within the product and its packaging must be observed.

## 2. Installation

### 2.1. Tools, resources and materials:

- > Drill
- > Drill bits, suitable for the drilling substrate and the fixing brackets
- > Ratchet (catrake) with socket, or SW 17 ring spanner (SW19 for M12)
- > SW 5 Allen key
- > SW 7, SW 13 and SW 17 ring spanners
- > Crosshead screwdriver
- > Spirit level and string for alignment
- > String to align the brackets
- > Test cable, resp. adjustment set (for initial operation)

### 2.2. Installation preparations:



Transport the awning to the site of installation, ensuring that the orientation is correct. The location of the drive side is indicated in the notes provided.



Secure the installation zone (the secured zone must be at least equivalent to the size of the fully deployed awning). If the awning is hoisted to higher installation positions with pulleys, the awning must be removed from the packaging. When attaching the hoists, ensure that the awning is properly fastened, but not damaged. Hoist the awning to the horizontal position.

Before commencing the installation, please verify the type and number of brackets is in conformity with the order and whether the installation substrate is the same as that stated on your order. If significant differences make the safe installation of the terrace awning seems doubtful; please consult the manufacturer of the system and an installation specialist.

If the information above is not observed, the terrace awning system may fall down and put the health and safety of persons at risk!

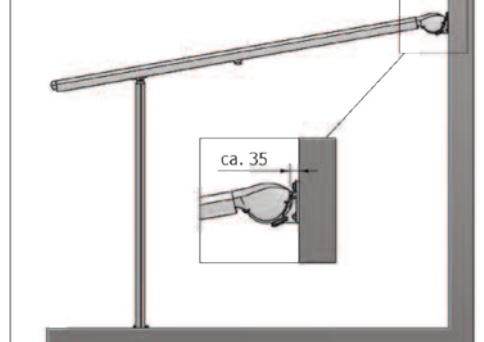
### 2.3. Wind resistance classes:

WIND RESISTANCE CLASS	DESCRIPTION	BEAUFORT SCALE WIND FORCE / WIND SPEED	A103: PERGO-LINE
CLASS 0	UNDEFINED; PRODUCT UNTESTED OR UNSUITABLE		
CLASS 1	GENTLE BREEZE	4 Beaufort / 20 - 27 km/h	✓
CLASS 2	FRESH BREEZE	5 Beaufort / 28 - 37 km/h	✓
CLASS 3	STRONG WIND	6 Beaufort / 38 - 48 km/h	✗ (ZRS ✓)

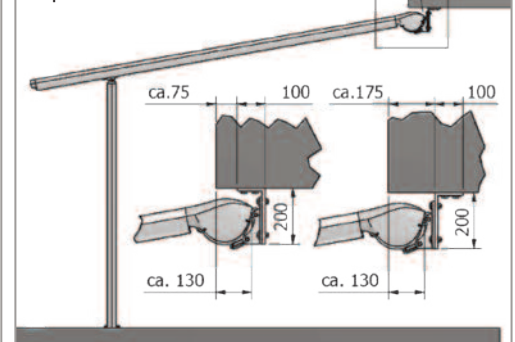
### 2.4. Installation variations:



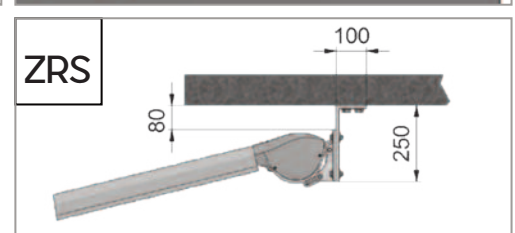
Face-fix brackets



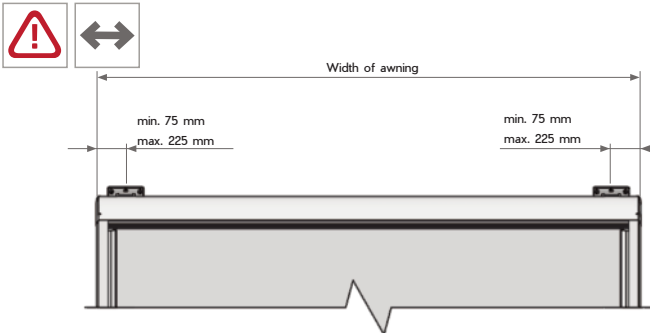
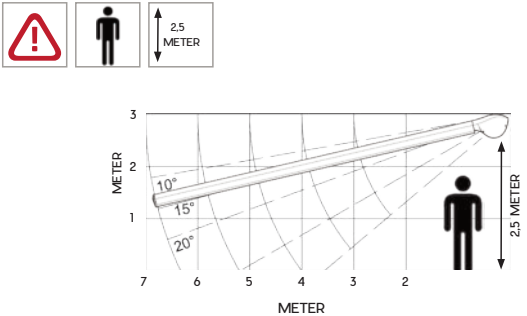
Top-fix brackets



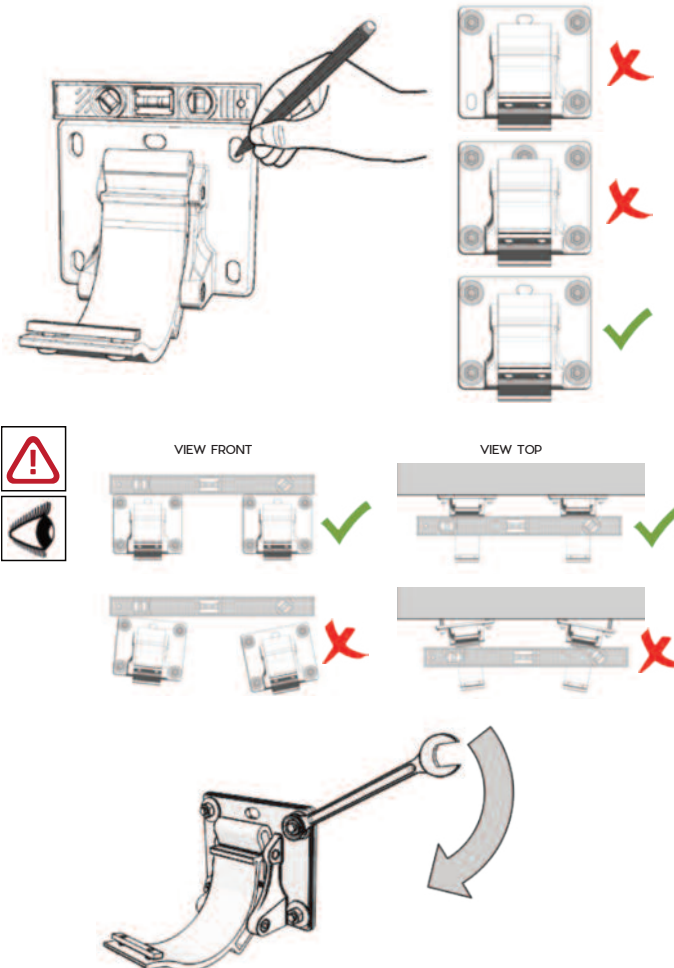
ZRS



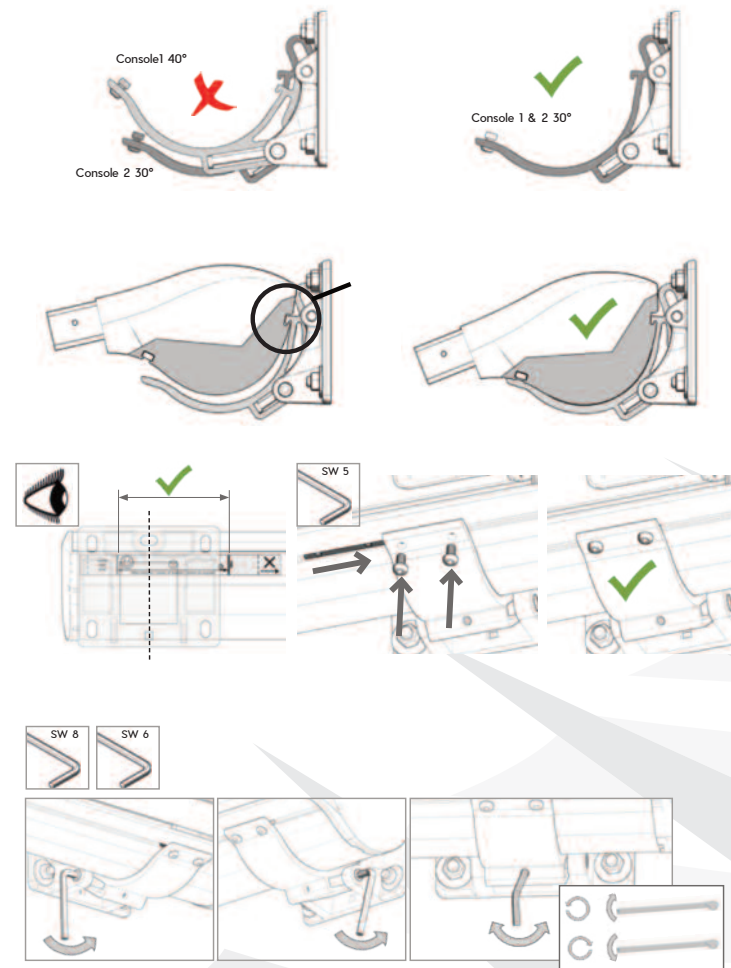
### 2.5. Installation height and position of brackets:



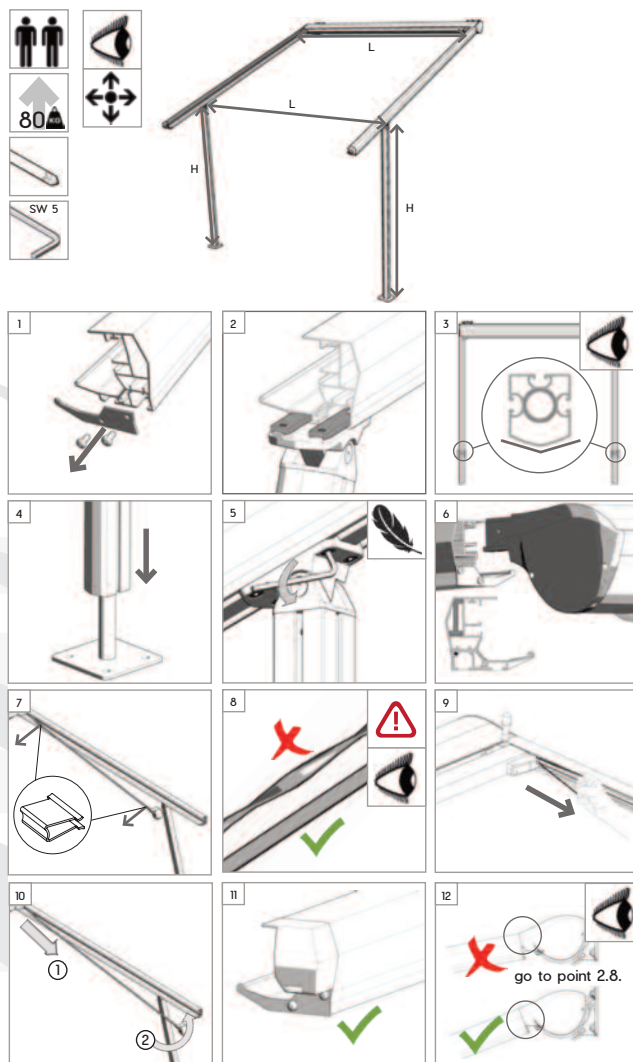
## 2.6. Fixing the installation brackets:



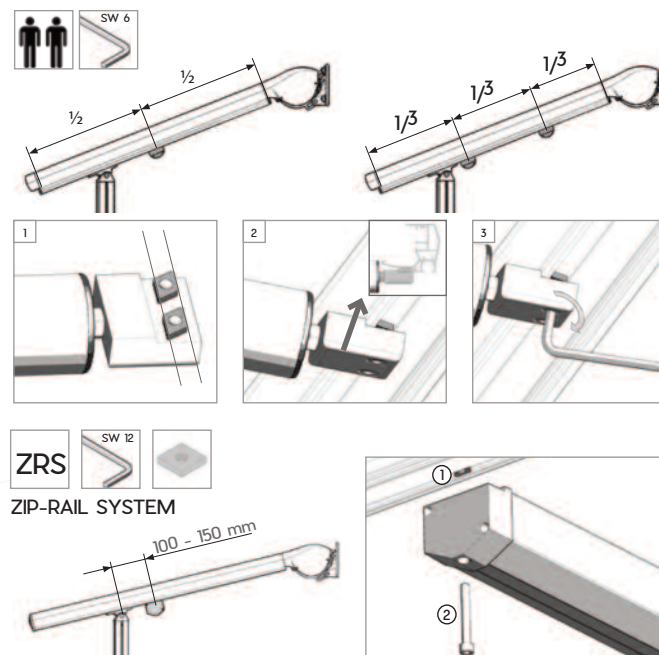
## 2.7. Installing the cassette:



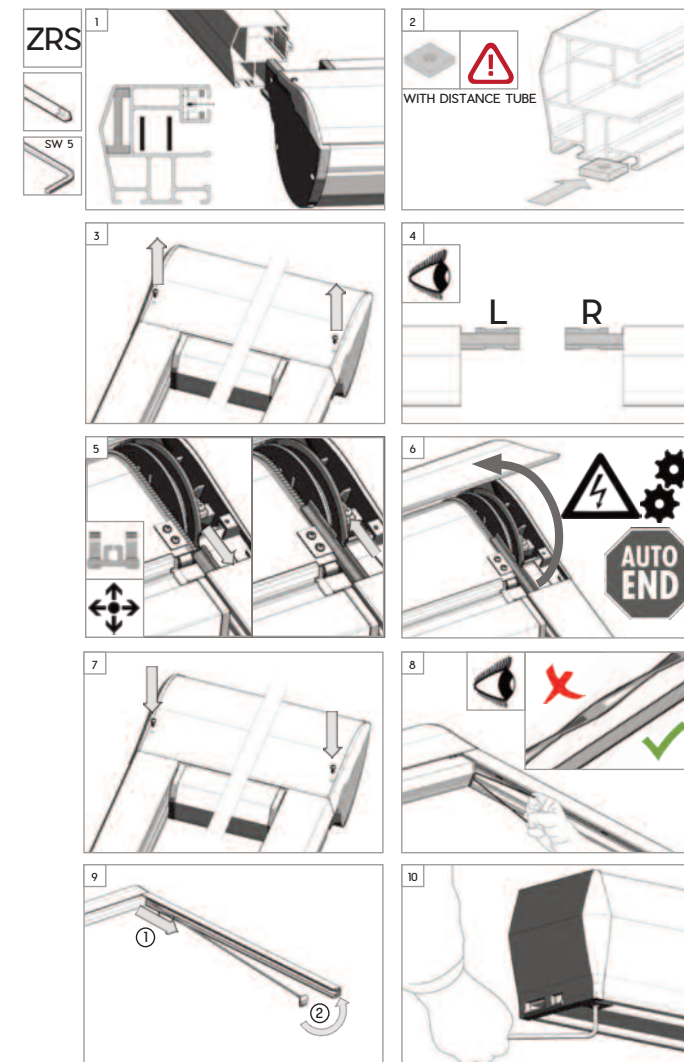
## 2.8. Installing rails and posts:



## 2.9. Installing the distance tube(s):

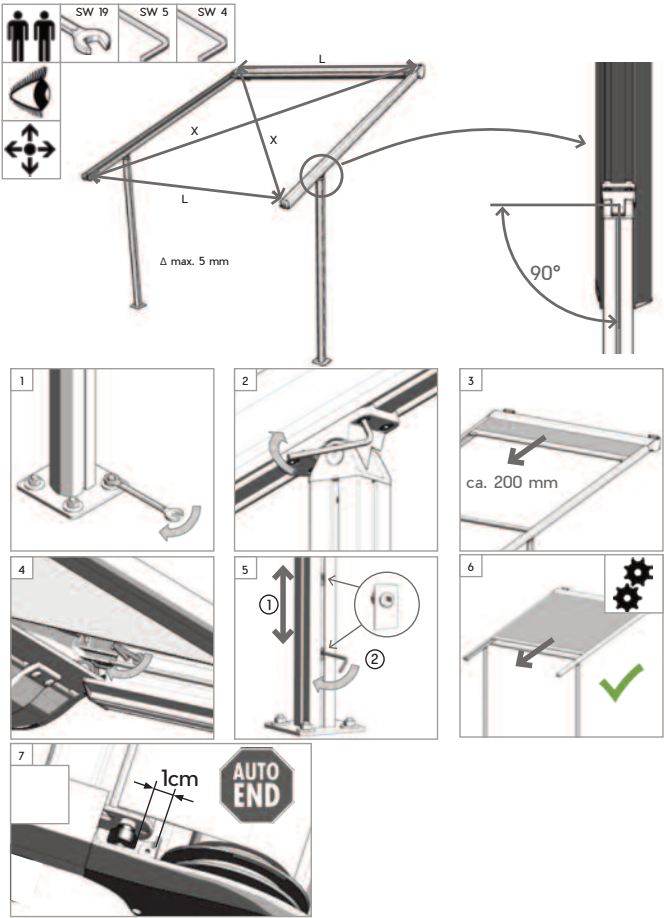


## 2.10. Installing rails and supports:

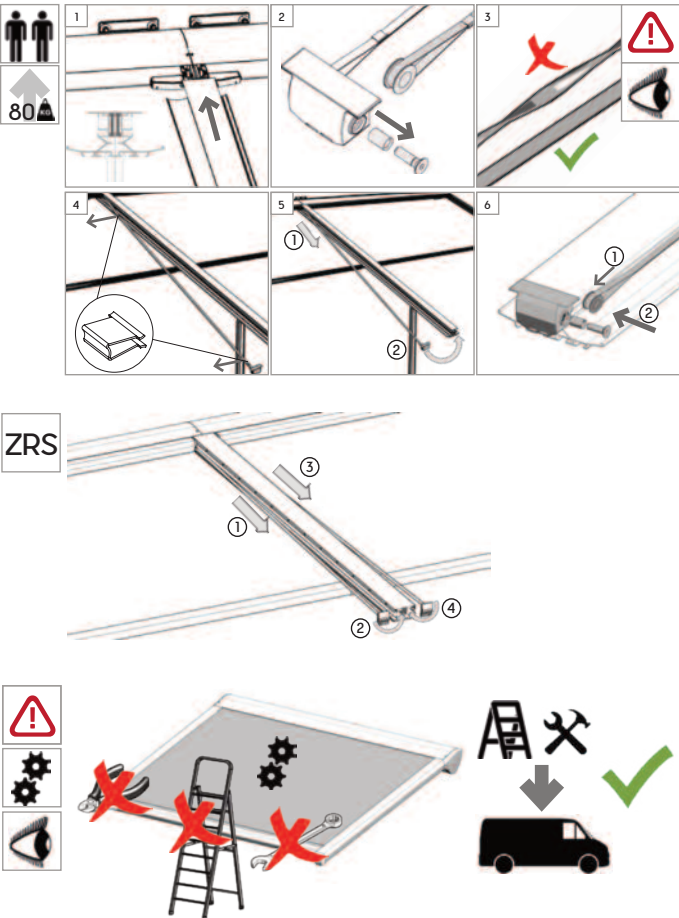




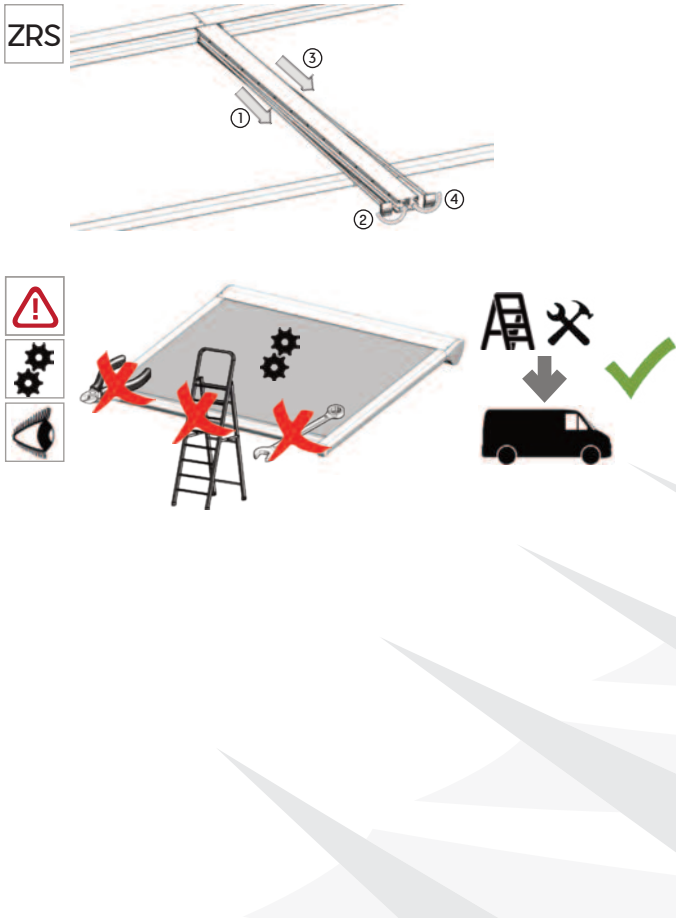
2.11. Alignment of the system:



2.12. Row system:



2.13. Coupled system:



### 3. Initial operation

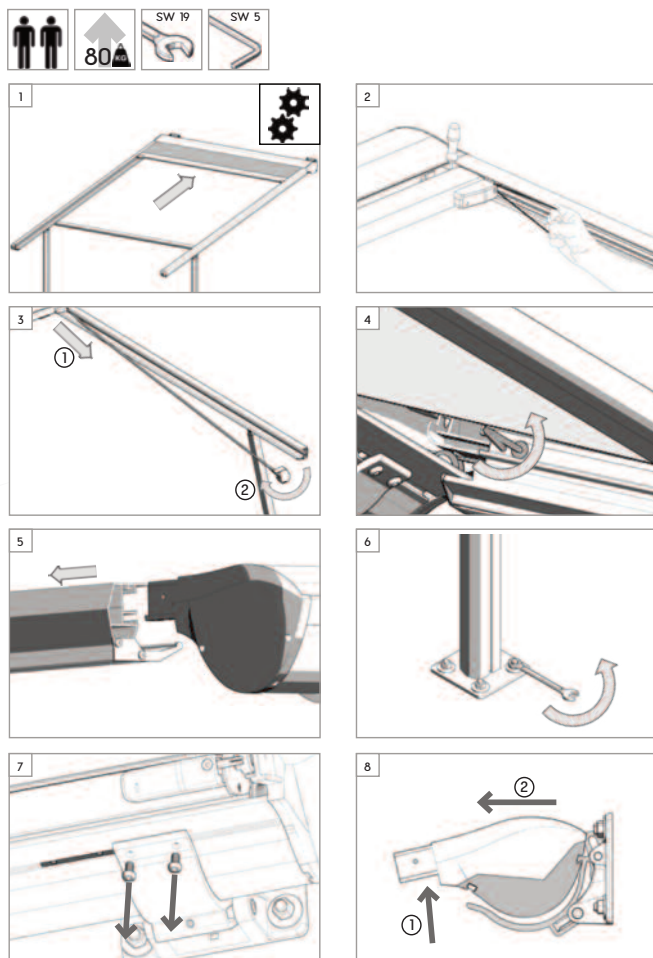
#### 3.1. Initial operation:



Give client comprehensive instructions about the operation of the awning. Failure to observe the instructions and incorrect operation can result in damages to the awning and accidents. Notify client of the wind resistance class of the awning.

### 4. Removing the Terrace Awning

#### 4.1. Removal:

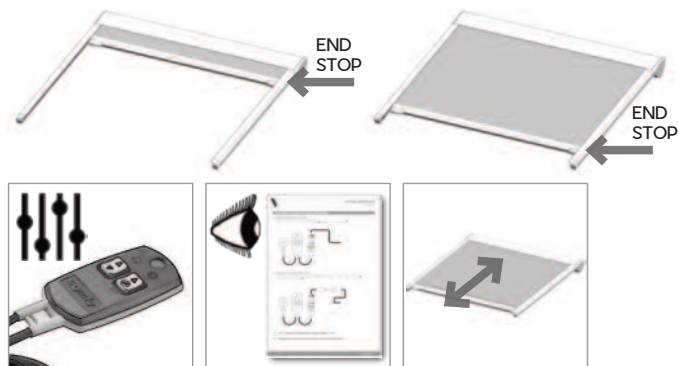


### 5. Troubleshooting

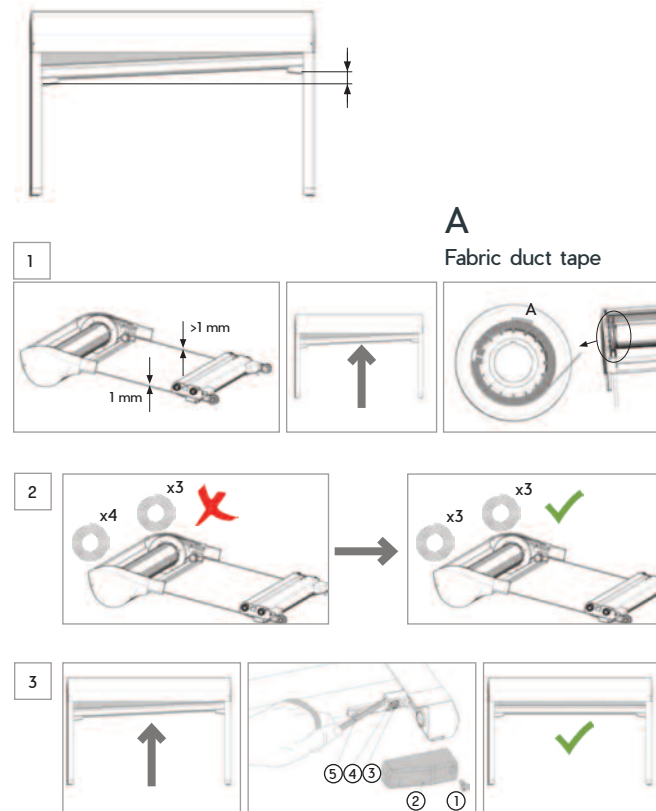
#### 5.1. Driving gear does not work:



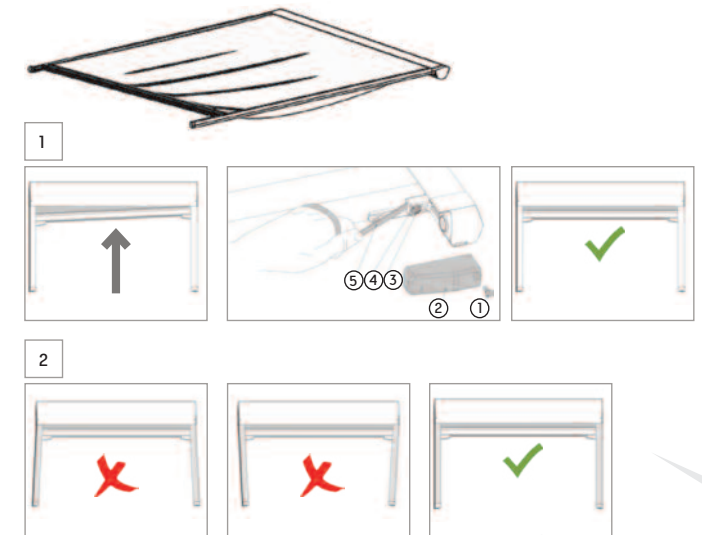
## 5.2. System does not extend or retract fully:



## 5.3. System does not close on one side:



## 5.4. Awning sags unevenly:





5.5. When operated, system moves by jerks and jolts or generates indefinable noises:









## A101: FOLDING-ARM AWNING COLLECTION

**A101: Cheetah****Residential | Light Commercial Non-Cassette System**

> Operation: Mechanical gearbox | RTS or IO Somfy motor

- > Specification: Width (mm): Up to 6,000 in a single section with 2 x folding-arms, 7,000 with 3 x folding-arms, 18,000 in a coupled section with up to 6 x folding-arms
- > Specification: Projection (mm): 1,500, 2,000, 2,500, 3,000
- > Application: Residential | light commercial installations
- > Standard Fabrics: Irisun acrylic collection | Ferrari Precontraint 302 PVC
- > Wind classification: Beaufort 5 - fresh breeze and Beaufort 6 - strong wind

**A101: Bobcat****Residential | Light Commercial Full-Cassette System**

> Operation: Mechanical gearbox | RTS or IO Somfy motor

- > Specification: Width (mm): Up to 4,500 in a single section with 2 x folding-arms
- > Specification: Projection (mm): 1,500, 2,000, 2,500
- > Application: Residential | light commercial installations
- > Standard Fabrics: Irisun acrylic collection | Ferrari Precontraint 302 PVC
- > Wind classification: Beaufort 5 - fresh breeze

**A101: Puma****Residential | Commercial Full-Cassette System**

> Operation: Mechanical gearbox | RTS or IO Somfy motor

- > Specification: Width (mm): Up to 5,000 in a single section with 2 x folding-arms
- > Specification: Projection (mm): 1,500, 2,000, 2,500, 3,000
- > Application: Residential | light commercial installations
- > Standard Fabrics: Irisun acrylic collection | Ferrari Precontraint 302 PVC
- > Wind classification: Beaufort 5 - fresh breeze and Beaufort 6 - strong wind

**A101: Jaguar****Commercial Non-Cassette System**

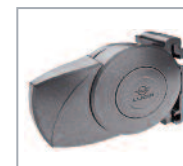
> Operation: Mechanical gearbox | RTS or IO Somfy motor

- > Specification: Width (mm): Up to 6,500 in a single section with 2 x folding-arms, 7,000 with 3 x folding-arms, 19,500 in a coupled section with up to 6 x folding-arms
- > Specification: Projection (mm): 1,500, 2,000, 2,500, 3,000, 3,500, 4,000, 4,500
- > Application: Commercial installations
- > Standard Fabrics: Irisun acrylic collection | Ferrari Precontraint 302 PVC
- > Wind classification: Beaufort 6 - strong wind

**A101: Panther****Commercial Semi-Cassette System**

> Operation: Mechanical gearbox | RTS or IO Somfy motor

- > Specification: Width (mm): Up to 6,500 in a single section with 2 x folding-arms, 7,000 with 3 x folding-arms, 19,500 in a coupled section with up to 6 x folding-arms
- > Specification: Projection (mm): 1,500, 2,000, 2,500, 3,000, 3,500, 4,000, 4,500
- > Application: Commercial installations
- > Standard Fabrics: Irisun acrylic collection | Ferrari Precontraint 302 PVC
- > Wind classification: Beaufort 6 - strong wind

**A101: Tiger****Residential | Commercial Full-Cassette System**

> Operation: Mechanical gearbox | RTS or IO Somfy motor

- > Specification: Width (mm): Up to 6,000 in a single section with 2 x folding-arms
- > Specification: Projection (mm): 2,000, 2,500, 3,000, 3,500, 4,000
- > Application: Residential | commercial installations
- > Standard Fabrics: Irisun acrylic collection | Ferrari Precontraint 302 PVC
- > Wind classification: Beaufort 6 - strong wind



ROLLER BLINDS



VERTICAL BLINDS



SKYLIGHT BLINDS



BESPOKE BLINDS



AWNINGS



CANOPIES



PARASOLS



GLASS PERGOLAS



RETRACTABLE ROOFS



BARRIERS



PLANTERS



RETRACTABLE  
PARAPET GLASS



JAMES ROBERTSHAW  
est.1860  
BESPOKE AWNINGS & BLINDS