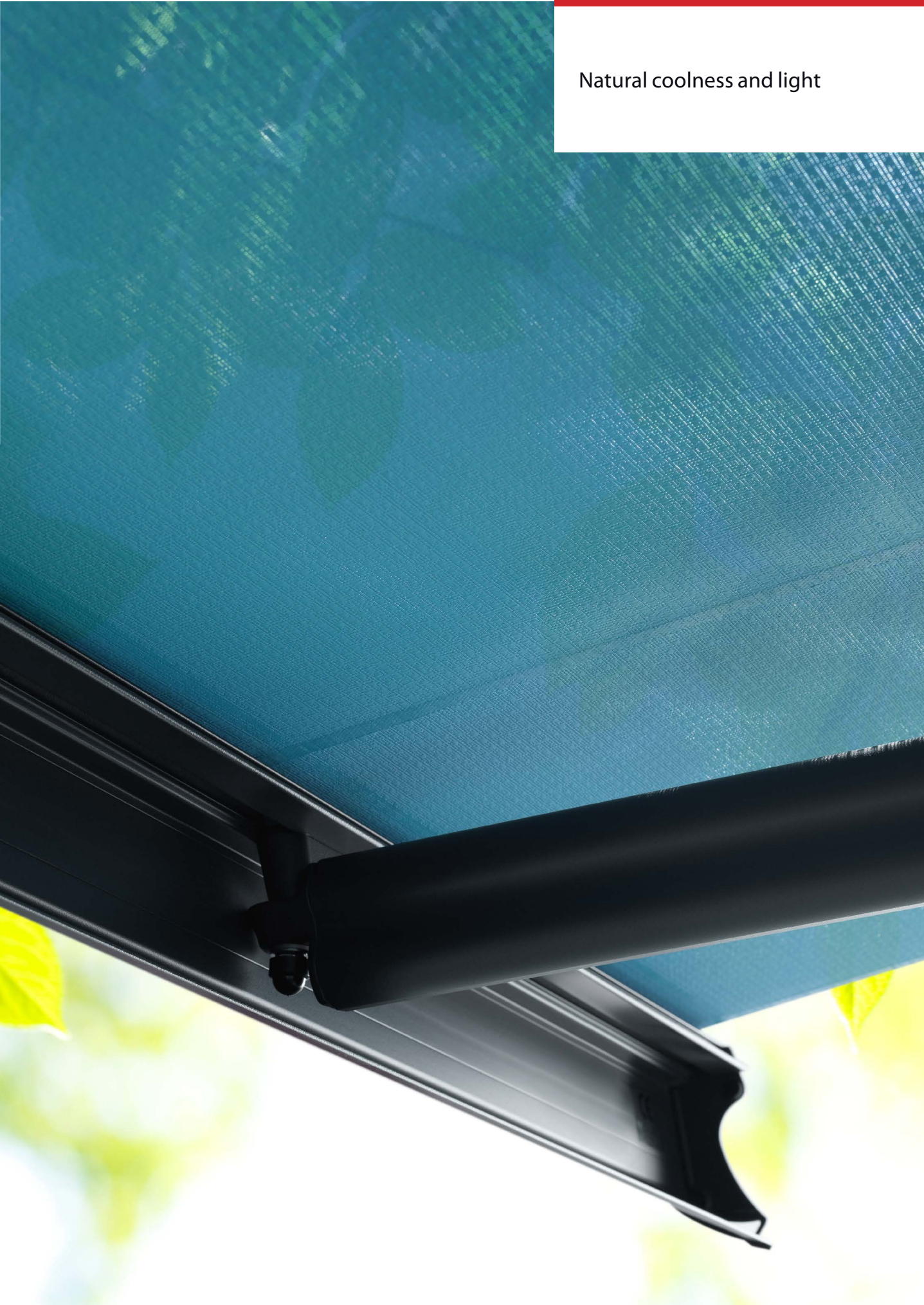


Natural coolness and light

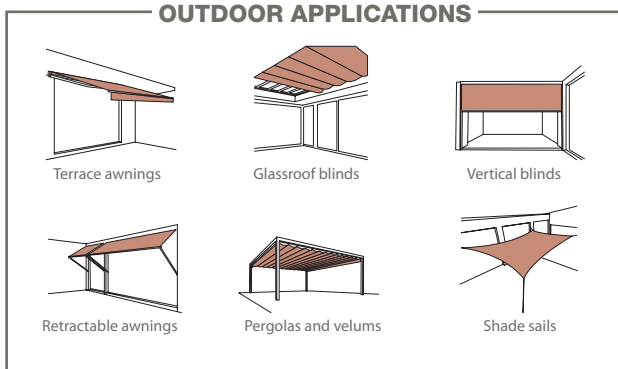


Soltis

Lounge 96



OUTDOOR APPLICATIONS



Natural light, modernity and comfort

Soltis Lounge 96 is the ideal fabric for furnishing your terrace or patio. Its micro-perforated design protects you from the sun's light and heat, while allowing air to pass through it. This provides you with shade similar to that of a tree.

■ Micro-perforated fabric

The fabric's micro-perforations allow air to circulate. This avoids the greenhouse effect usually felt beneath a standard acrylic fabric.

■ Natural light

The fabric's open nature allows light into your house. You'll enjoy natural light as well as a glare-free outward visibility.

■ Enduring colours

The fabric's unique design and its enduring, plain colours bring a touch of modernity to your terrace or patio.

■ Durability

The colours' high UV resistance guarantees your fabric's long-term aesthetics. Its smooth surface resists dirt, mould and facilitates cleaning.



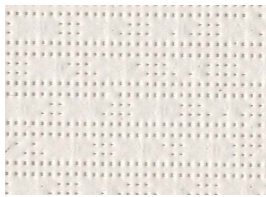
Micro-perforated fabric
**for a feeling of
coolness**

Soltis
Lounge 96

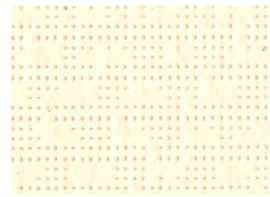
**Prepare for your summer
and enjoy your terrace or patio
WITH A SOLTIS LOUNGE 96 FABRIC!**



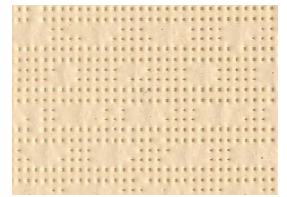
White 96-8102*



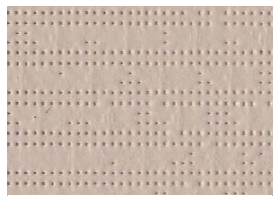
Shea 96-50843



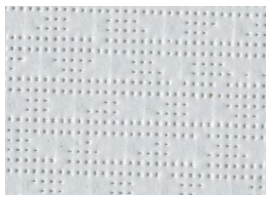
Off-white 96-1103*



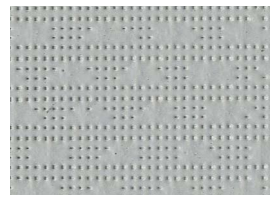
Vanilla 96-8861*



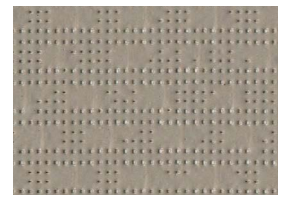
Sandy beige 96-2135



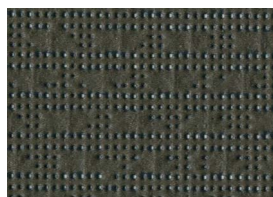
Cloud 96-50272



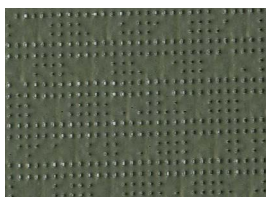
Boulder 96-2171*



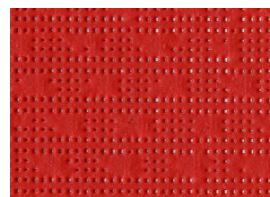
Mole 96-50850



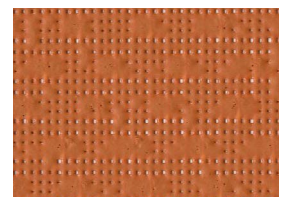
Bronze 96-2043



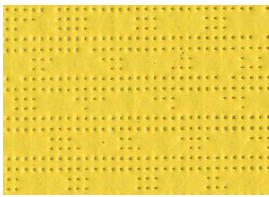
Jungle 96-50849



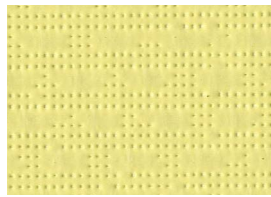
Red 96-8255



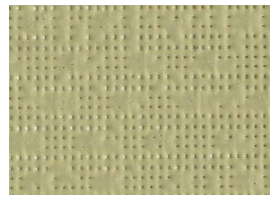
Caramel 96-50261



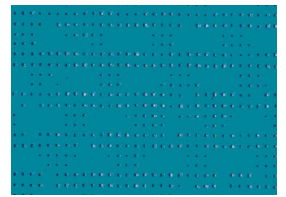
Aureolin 96-50845



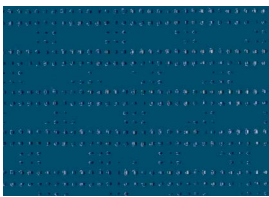
Citrus 96-50846



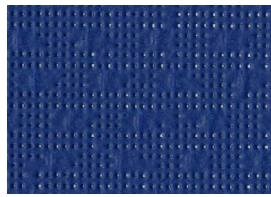
Lime 96-50848



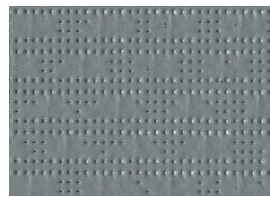
Acapulco 96-50847



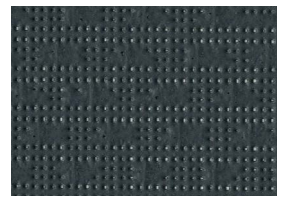
Atlantis 96-50851



Midnight blue 96-2161



Platinum 96-50844



Anthracite 96-2047*

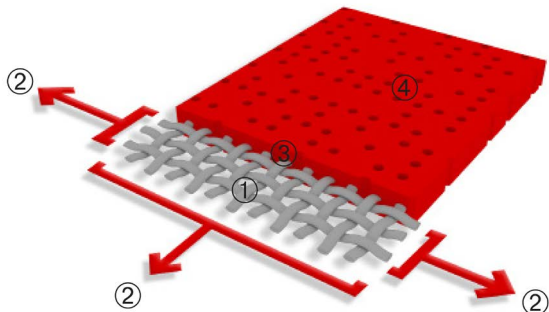


Black 96-8450

* Colours available in Soltis Proof W96 waterproof version

■ Exclusive Précontraint® technology

This unique, world-patented technology involves maintaining the composite in bi-axial tension throughout the manufacturing cycle. It ensures our materials' exceptional performance characteristics, which exceed market standards in terms of long-term stability, strength, coating thickness and flatness.



High-tenacity polyester micro-yarn base cloth	①	Superior elongation and tear resistance
A coating with fabrics under bi-axial constant tension in both warp and weft directions	②	No deformation during processing and use
Greater coating at the top of the yarns and a dirt resistant surface treatment	③	Superior aesthetic and mechanical durability
Exceptional flatness and thinness	④	Smooth finish easy to clean, space saving, easy rolling

■ Solar and light properties (based on EN 14501)






	REFERENCES	 Thermal comfort* (outdoor)	 Outward visibility	 Glare control
	96-8102	★★★★★	★☆☆☆☆	★☆☆☆☆
	96-50843	★★★★★	★☆☆☆☆	★☆☆☆☆
	96-1103	★★★★☆	★☆☆☆☆	★☆☆☆☆
	96-8861	★★★★★	★☆☆☆☆	★☆☆☆☆
	96-2135	★★★★★	★★☆☆☆	★☆☆☆☆
	96-50272	★★★★★	★☆☆☆☆	★☆☆☆☆
	96-2171	★★★★★	★★☆☆☆	★★★★★
	96-50850	★★★★★	★★☆☆☆	★★★★★
	96-2043	★★★★★	★★☆☆☆	★★★★★
	96-50849	★★★★★	★★☆☆☆	★★★★★
	96-8255	★★★★☆	★★☆☆☆	★★★★★
	96-50261	★★★★★	★★☆☆☆	★★★★★
	96-50845	★★★★★	★★☆☆☆	★☆☆☆☆
	96-50846	★★★★★	★☆☆☆☆	★☆☆☆☆
	96-50848	★★★★★	★☆☆☆☆	★☆☆☆☆
	96-50847	★★★★★	★★☆☆☆	★★★★★
	96-50851	★★★★☆	★★☆☆☆	★★★★★
	96-2161	★★★★☆	★★☆☆☆	★★★★★
	96-50844	★★★★★	★★☆☆☆	★★★★★
	96-2047	★★★★★	★★☆☆☆	★★★★★
	96-8450	★★★★★	★★☆☆☆	★★★★★

* Based on a solar factor for glazing type D (g=0.32 - U=1.1) calculated using ISO 52022-3 - Method 2

★★★★☆	very little effect
★★★☆☆	little effect
★★☆☆☆	moderate effect
★★★★☆	good
★★★★★	excellent

Soltis

Lounge 96

	■ Technical properties	Standards
Openess factor	4%	
Weight	400 g/m ² • 11.8 oz/sq.yd	EN ISO 2286-2
Thickness	0.45 mm • 450 microns	
Roll width	120 cm - 267 cm • 47.2 in. - 105.1 in.	
■ Roll length		
Standard piece size	40 lm • 43.7 yd	
■ Physical properties		
Tensile strength (warp/weft)	220/220 daN/5 cm	EN ISO 1421
Tearing strength (warp/weft)	30/25 daN	DIN 53.363
■ Reaction to fire		
Rating	M2	NFP 92-507
Euroclass	B-s2,d0	EN 13501-1
■ Management system		
Quality		ISO 9001
Environmental		ISO 14001
Energy		ISO 50001
■ Certifications, labels, warranty		
	  	 
■ Tools and services		
Tool for evaluating the energy savings that can be achieved with Soltis solar protection: SOLTISSIM. Contact your Serge Ferrari representative.		

¹ "+=0" logo: summarises the Serge Ferrari Group's commitment to CSR, to align economic performance and positive impact. Find out about our concrete actions in our CSR report.

Quoted technical characteristics are average values subject to +/-5% tolerance.

The purchaser of our products is responsible for their application or transformation in relation to possible third party rights. Moreover, the purchaser of our products is responsible for their installation and usage in compliance with the standards, working practices and safety regulations of their destination country. Please refer to our warranty document with regard to contractual liability.

Values quoted in this document are commonly used test results for design purposes. They are given for information only in order to offer our customers optimum usage of our products. Our products are subject to improvements resulting from technical developments and we reserve the right to modify their characteristics at any time. The purchaser of our products is responsible for checking the above data.