

JAMES ROBERTSHAW

est.1860

BESPOKE AWNINGS & BLINDS

MODULBOX 400
FOLDING-ARM AWNING SYSTEM



JAMES ROBERTSHAW

est.1860

BESPOKE AWNINGS & BLINDS

Family owned James Robertshaw has over 160 years experience of designing, manufacturing and installing bespoke awnings, coverings and blinds for the specific needs of operators in the leisure & hospitality, blind & curtain trade and residential sectors.

About Us.

Our story began back in 1860, when Mr James Robertshaw of Collyhurst, Manchester set up shop manufacturing traditional box shop awnings, complete with hand-carved woodwork. Added to this were metal roller blinds and other companion components, all fabricated on-site, beginning an unbroken trading history spanning an incredible seventeen decades, three centuries and two millennia.

During those first one hundred years, JR cemented its company status with a number of patents, including its famous 'Spring Roller' design in 1908. That commitment to innovation and technical advancement remained at the heart of the organisation ever since

From the Victorian age of the Industrial Revolution, through two World Wars and more than a few depressions, the company survived and thrived. It re-located from its original factory in Collyhurst and settled in a historical spinning mill in Farnworth.

The business stayed within the Robertshaw family until the death of James' grandson, William Lancelot Robertshaw in 1960 and was purchased by then Production Manager Arthur Harrison. It is then that the modern story of JR really begins.

In 1978, the company was taken over by 25 year old Nigel Sharrock, who would carry the JR brand from out of its Victorian history and into the modern world. For nearly forty years, Nigel continually strove to improve products, processes and service that JR is renowned for.

After Nigel's retirement in 2016, JR is still a family owned and managed business with Nigel's wife, Lesley and son Matthew, joining him sitting on the board of directors. In 2010 after 50 years at its Farnworth home, JR re-located again to its current, modern facilities and headquarters at Horwich, Bolton

All products are designed, manufactured and showcased within our current home and Customer Centre. With a wide reaching client base ranging from trade sub-dealers; independent bars and national hospitality brands; architects, contractors, residential, education and health-care; James Robertshaw has the creativity, expertise and knowledge to make a visible difference to any business or home.

James Robertshaw. We don't just find the solution, we create it.





The Alchemist, Leeds



The Alchemist, Leeds



The Alchemist, Leeds

Modulbox 400 – Progressive Solutions.

The Modulbox 400 is a range of folding-arm awnings within a monobloc system, designed to achieve maximum dimensions with a compact and attractive configuration. Using the same components, three design progressive solutions are achieved: Cougar (full-cassette), Panther (semi-cassette) and Jaguar (non-cassette).

Are you looking for an awning as an architectural statement, as well as a functional product? In addition to their primary function as sun protection, James Robertshaw awnings are a genuine visible improvement for your home or business. Our awning systems, with their design, quality and technology, are the first option if you are looking for high-quality, robust and appealing protection, without compromise.

Also known as Patio Awnings or Retractable Awnings, these systems extend from the side of your building to create a shaded and covered area. The UK public are becoming more accustomed to enjoying drinking and dining outdoors. Patios and decking areas at both residential locations and also commercial sites such as pubs, bars and restaurants are increasingly popular spaces to enjoy a meal, drinks and social gatherings.

Designed to improve the appearance of outdoor commercial spaces, the Modulbox 400 covers a width of up to a massive 12,000mm by 4,000mm projection, in a single cover, in a single system. Protecting diners from both the sun but also more importantly, any adverse weather conditions providing a reliable, durable and dynamic shelter.

This system is based on an aluminium framework structure, with a MONOBLOC articulated arm system. This results in the system having all the advantages of a standard retractable folding-arm awning, resulting in a more robust and stronger system. This produces a more adaptable and easier solution within installation for the adjustment of the folding arms. The Modulbox 400 awning system allows coverage in large dimensions, with a single awning unit.

Discover all its possibilities.

Utilising the same basic components, it is possible to achieve progressive solutions:

- > 1. Cougar (full-cassette)
- > 2. Panther (semi-cassette)
- > 3. Jaguar (non-cassette)

Within the Jaguar version, additional options are available: Manual pitch control, top-fix installation, cross-over arm option, variable valance option.



MODULBOX 400 FOLDING-ARM AWNING SYSTEM

One System, Endless Benefits.

Modulbox 400 provides great technical and functional advantages. In addition, the quality of its finishes provides it with an extremely refined aesthetic.

100% Metal

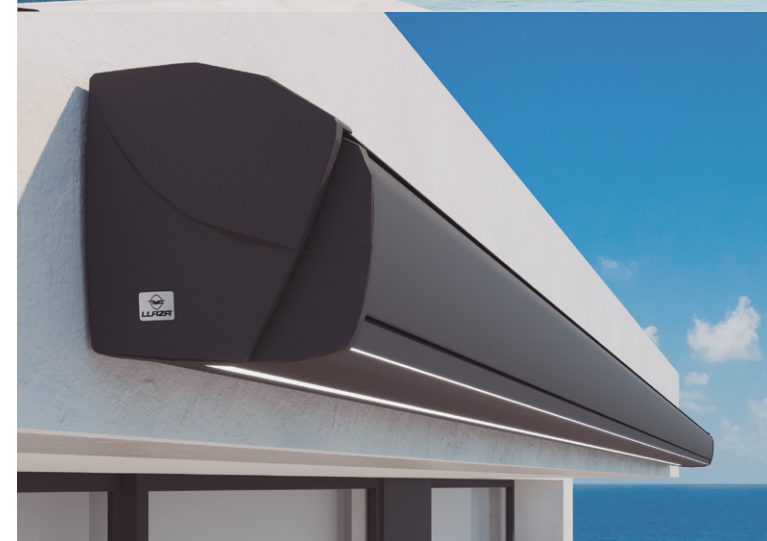
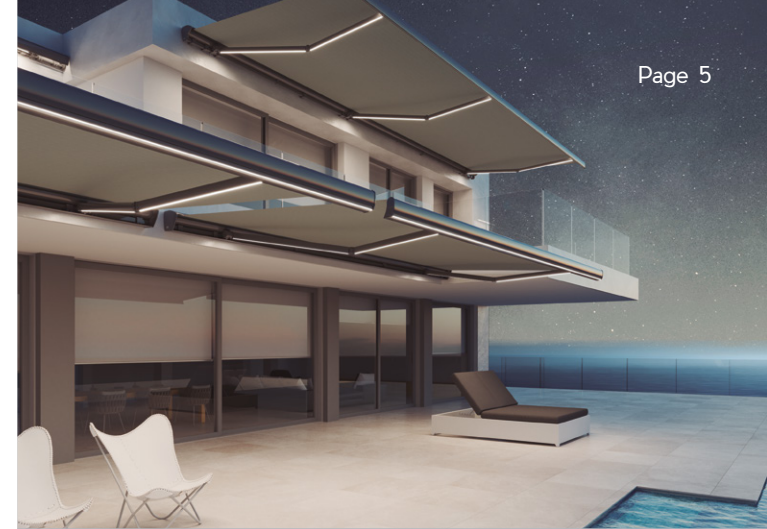
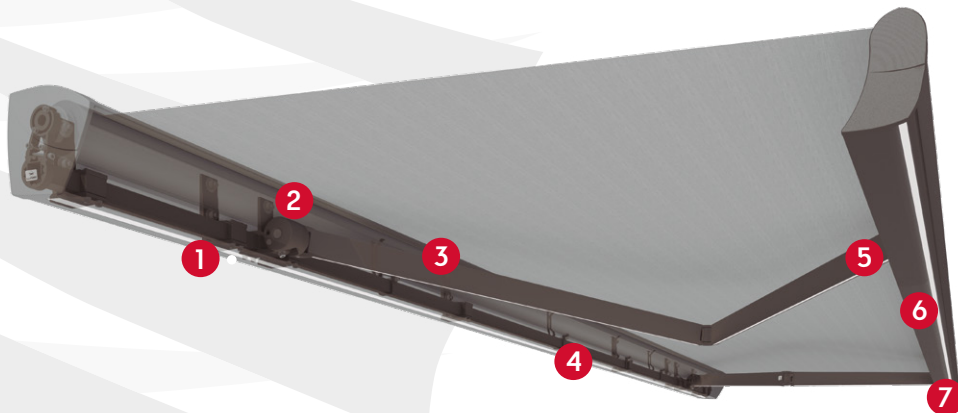
The lateral ends are made entirely from aluminium for greater protection and durability; they are also lacquered in the same colour as the rest of the structure, achieving optimal homogeneity.

48m² Coverage

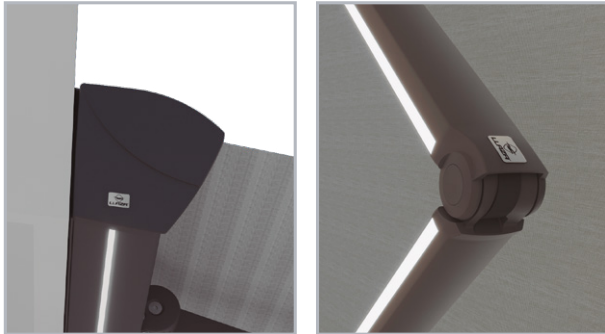
The Modulbox 400 can achieve a massive coverage of 12,000mm in width, with an impressive continuous cover, and a projection capacity of 4,000mm, using four arms to protect large spaces.

Features:

- > 1. Multiple LED lighting possibilities for a full 24 hours of enjoyment.
- > 2. Reliable and simple pitch adjustment.
- > 3. ONYX LUX-400 retractable arm with integrated dimmable LED Lighting. No cables in sight.
- > 4. Versatility of the inner brackets to configurate all the options.
- > 5. Marks in the arm support and front rail connector to guide and regulate the perfect profile coupling.
- > 6. Front profile designed to expel water.
- > 7. Possibility of integrating a vertical front variable valance (Sombrex).



LED Equipped



Cassette profile

Onyx Lux-400

Pitch Control and Cross-Over Arms

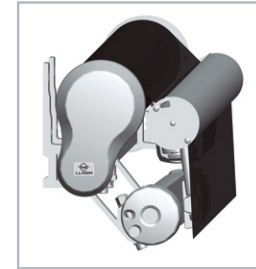
Cross-Over Arms: to achieve larger projections in more reduced widths regarding the general minimum widths of the awning. Pitch control functionality: to modify the angle of the awning to meet the needs of any time of day.

Assisted Regulation

The pitch adjustment is carried out in just few easy steps and also guarantees a perfect closure within the Cougar (full cassette) and Panther (semi-cassette) options. A system of marks guides the position of the arm supports and the front rail connectors.

Water Drainage

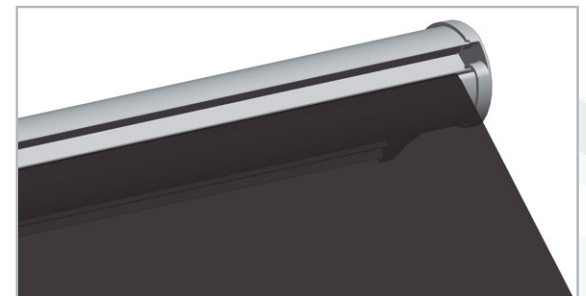
If the system is out in light rain, the front profile is designed to expel water.



Cross-Over Arms



Pitch Control



MODULBOX 400 FOLDING-ARM AWNING SYSTEM

A Single System for a Wide Range of Solutions.

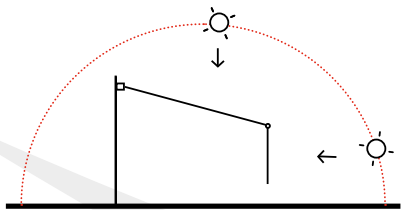
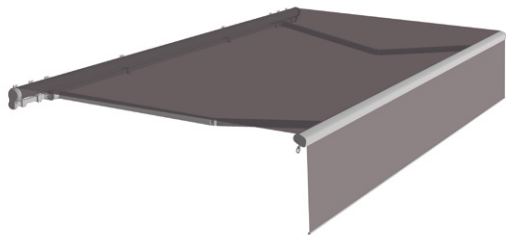
Ease & Versatility

The same installation and profile attachment brackets are used for the different versions of the Modulbox 400. This adds significant value to the product, both at a technical level for assembly and for optimising the stock of necessary parts.

The Most Complete System with a Variable Valance Option.

The Modulbox 400 system makes it possible to incorporate the SOMBREX (variable valance) within all configuration options. The valance optimises the performance of the product as it provides greater sun protection even when the sun's position is low on the horizon.

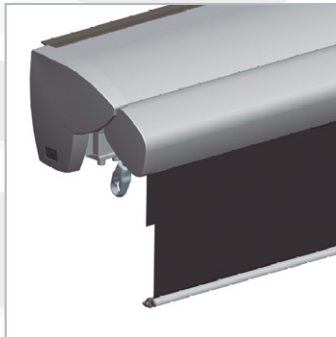
Another advantage of incorporating a SOMBREX is the achievement of greater privacy to enjoy the outdoor space.



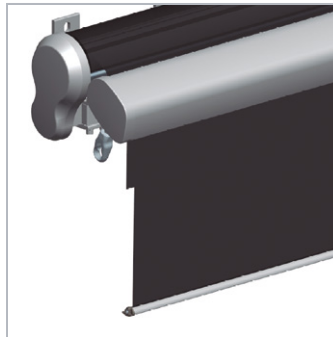
Application Examples



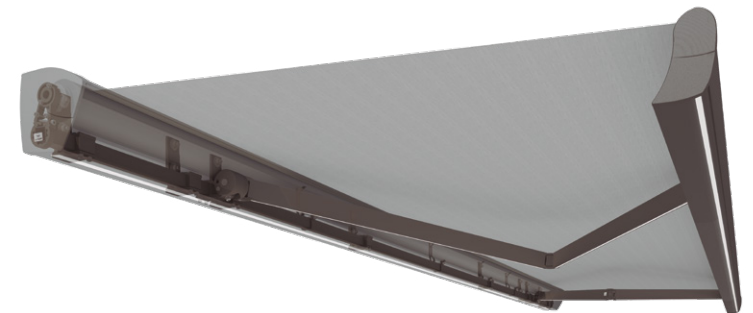
Cougar | Modulbox 400



Panther | Modulbox 400

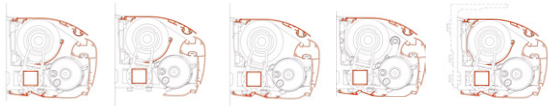


Jaguar | Modulbox 400



Cougar | Modulbox 400.

Possibilities

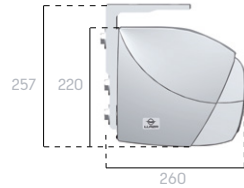


Dimensions (mm)

> Wall Installation



> Ceiling Installation



- > This model achieves the full performance required of an awning.
- > Full protection as the arms and the fabric keep sheltered inside the cassette.

Lighting Possibilities

- > Cassette profile
- > Front profile
- > Arms (Onyx Lux)

Operation

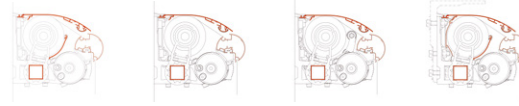
- > Motorised
- > Automated

Sombrex

- > Manual
- > Motorised

Panther | Modulbox 400.

Possibilities

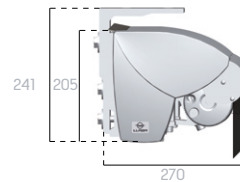


Dimensions (mm)

> Wall Installation



> Ceiling Installation



- > The Semi-Cassette option provides high protection of the fabric, the supports and also the arms, as they are kept protected by the top profile and the side covers.
- > The round shape of the front profile opens the Modulbox model to more aesthetic possibilities while maintaining its strength and resistance.

Lighting Possibilities

- > Front profile
- > Arms (Onyx Lux)

Operation

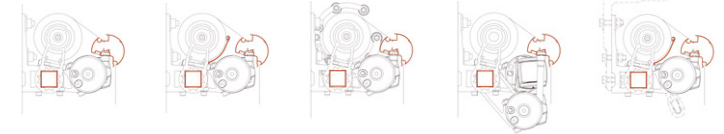
- > Manual
- > Motorised
- > Automated

Sombrex

- > Manual
- > Motorised

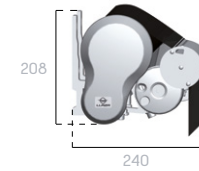
Jaguar | Modulbox 400.

Possibilities

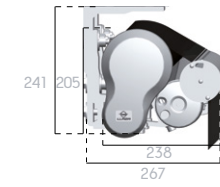


Dimensions (mm)

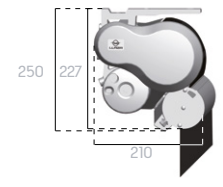
> Wall Installation



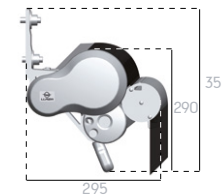
> Ceiling Installation



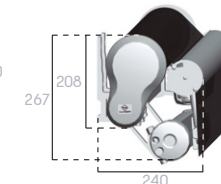
> Balcony Installation



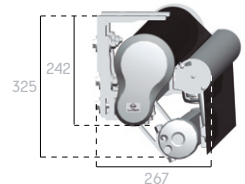
> SCDV Installation



> Wall Installation Cross-Over Arms



> Ceiling Installation Cross-Over Arms



- > The Non-Cassette configuration provides a wide range of configurations to adapt to the needs of each installation: face-fix, top-fix, balcony, Scandinavian style or cross-over arms.
- > Possibility of pitch control functionality, to control the angle of the awning depending on the sun's position throughout the day.

Lighting Possibilities

- > Front profile
- > Arms (Onyx Lux)

Operation

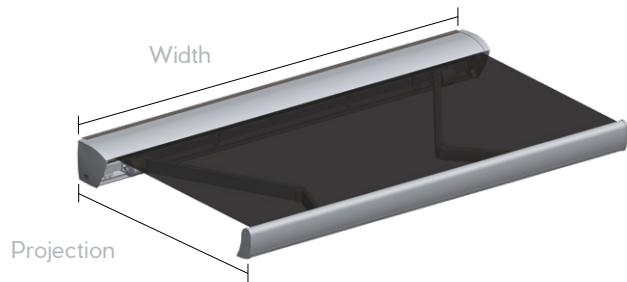
- > Manual
- > Motorised
- > Automated

Sombrex

- > Manual
- > Motorised

MODULBOX 400 FOLDING-ARM AWNING SYSTEM

Technical Information.



Application:

- > Terraces
- > Catering

Finishes:

- > Lacquer in accordance with QUALICOAT standards
- > Stainless steel screws and bolts
- > Arms with integral lacquering

Installation:

- > Wall
- > Ceiling

Classification:

- > Wind: Up to 28 km/h
- > Durability: Min. 10,000 manoeuvres

Specification:

- > Arms: 2
- > Width: 6,000mm
- > Projection: 4,000mm
- > Arms: 3
- > Width: 9,000mm
- > Projection: 4,000mm
- > Arms: 4
- > Width: 12,000mm
- > Projection: 4,000mm

Lighting Possibilities:

- > Arms (Onyx Lux)

Recommendations:

Max. dimensions for recommended fabrics (mm)

Width x projection		FULL BOX	SEMI BOX	SEMI OPEN	OPEN	Open
		2 Arms	3 Arms	4 Arms	2 Crossed Arms	
REACRIL	RECACRIL	6,000 x 4,000	9,000 x 4,000	12,000 x 4,000	4,000 x 4,000	
	RECSYSTEM	6,000 x 4,000	9,000 x 4,000	12,000 x 4,000	4,000 x 4,000	
	RECWATER	5,000 x 3,000	7,500 x 3,000	10,000 x 3,000	3,000 x 3,000	
RECSREEN	RecScreen 4000P - 1%	6,000 x 3,500	9,000 x 3,500	12,000 x 3,500	3,500 x 3,500	
	RecScreen 6000 - 2%	5,000 x 3,000	7,500 x 3,000	10,000 x 3,000	3,000 x 3,000	
	RecScreen 7000 - 3%	6,000 x 3,500	9,000 x 3,500	12,000 x 3,500	3,500 x 3,500	
	RecScreen RAINLESS	5,000 x 3,000	7,500 x 3,000	10,000 x 3,000	3,000 x 3,000	
PVC	RECAFLEX PRO	5,250 x 3,000	7,500 x 3,000	10,500 x 3,000	3,000 x 3,000	

Arm Options:

- > ONYX System: Onyx 400
Onyx Lux-400



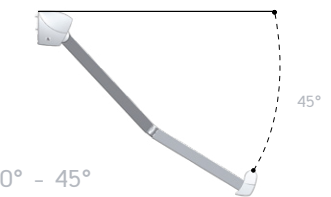
ONYX System

Pitch:

- > Front



- > Ceiling



- > Wall, Ceiling and Scandinavian: 0° - 45°
- > OPEN STD crossed arms 0° - 30°
- > OPEN Balcony 45° - 85°

Meet the Sales Team.

James Robertshaw has a highly skilled and professional team working together with its clients to provide the right, bespoke solutions.

With the same point of contact throughout the whole process, James Robertshaw will ensure all products are manufactured, delivered and installed on time and to budget.

The team of architects, designers, surveyors and installers are highly skilled and trained, capable of working to the tightest of deadlines and the most demanding of physical environments.

To find out more about James Robertshaw and its products, contact one of the sales team today.

t: 01204 574 764 e: sales@jamesrobertshaw.co.uk



Alice Fitton
Operations Team Leader
alice.fitton@jamesrobertshaw.co.uk



Ged Hartshorn
Operations Director
ged.hartshorn@jamesrobertshaw.co.uk



Matthew Garnett
Managing Director
matthew.garnett@jamesrobertshaw.co.uk



Michael Baxter
Sales Manager
michael.baxter@jamesrobertshaw.co.uk



Sean Smith
Sales Manager
sean.smith@jamesrobertshaw.co.uk



Elaine Partington
Sales & Administration
elaine.partington@jamesrobertshaw.co.uk







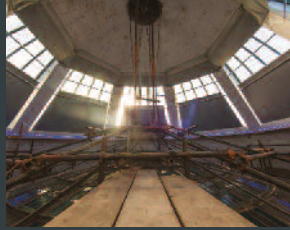
ROLLER BLINDS



VERTICAL BLINDS



SKYLIGHT BLINDS



BESPOKE BLINDS



AWNINGS



CANOPIES



PARASOLS



GLASS PERGOLAS



RETRACTABLE ROOFS



BARRIERS



PLANTERS



RETRACTABLE
PARAPET GLASS



JAMES ROBERTSHAW

est.1860

BESPOKE AWNINGS & BLINDS